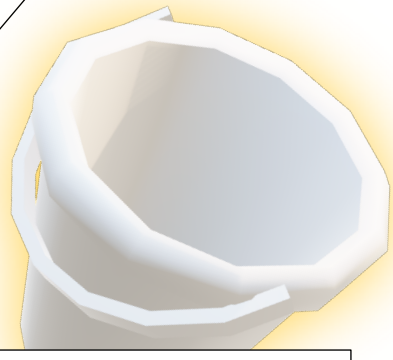


GETTING TO KNOW...

Funding our community...made simple!

How is HAH funded & where does our money go? (Numbers are approximate to keep things simple. For exact figures, please visit the Club Office)



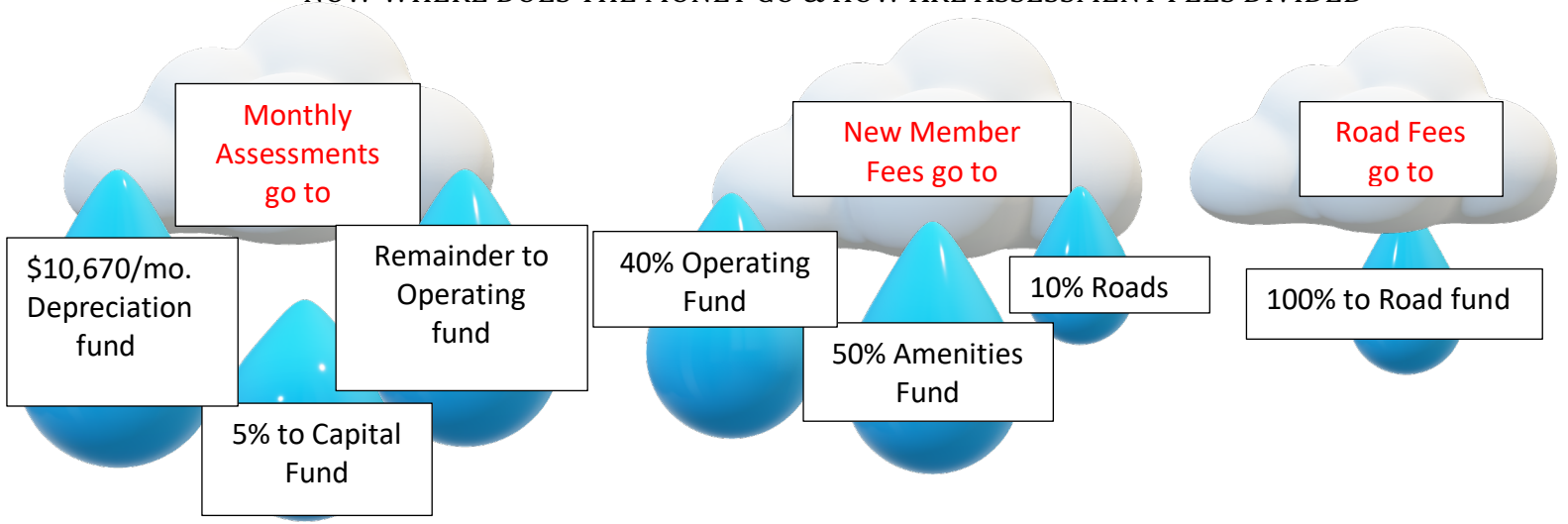
GENERAL FUND

All money flows through the General Fund.
How does the money come in?

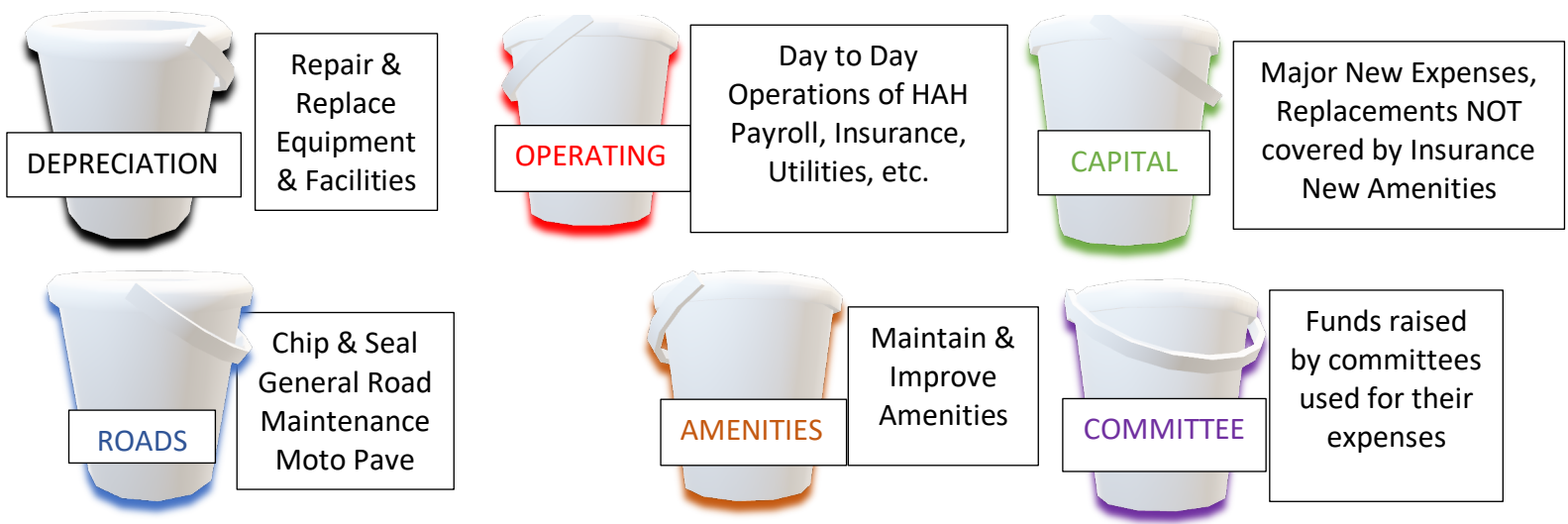
General Fund	Amount
740 Member Accounts @\$170/mo. X 12 mos.	\$1,509,600
New Member Fee ~ 40 New members x \$4400	\$176,000
Road Fees- 740 members pay \$200/year	\$148,000
Restaurant Income (Lodge & Clubhouse)	\$335,000
Other Income (Echo ads, Permits, Fines, etc.)	\$10,000

(estimates – for actual numbers visit Club Office)

NOW WHERE DOES THE MONEY GO & HOW ARE ASSESSMENT FEES DIVIDED



HOW ARE THESE FUNDS USED?



ACTUAL INFORMATION CAN BE FOUND UNDER THE MEMBER INFORMATION TAB ON OUR CLUB WEBSITE

Amenities & Committee Funds are NOT used as part of our operations